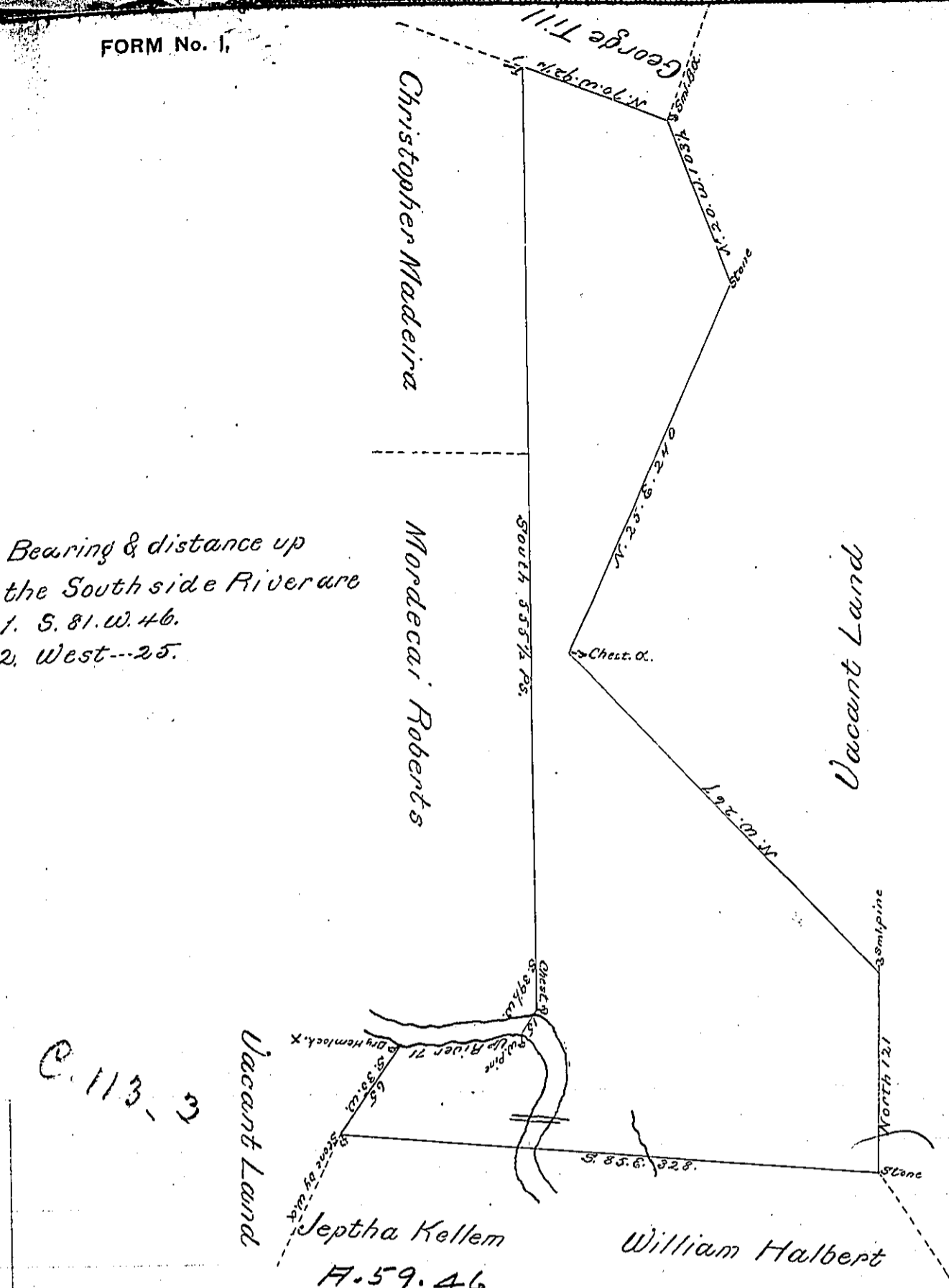


Lackawaxen
&
Palmyra -
PIKE

Bearing & distance up
the South side River are
1. S. 81. W. 46.
2. West --- 25.



C. 113-3

By Virtue of a Warrant dated the 3d. July 1784
 Surveyed the 7th. September 1784 to Thomas Griffy the above
 described tract of Land Situate on both sides of Lack-
 awaxen River Including the last great falls thereof
 below the mouth of ~~Shoholy~~ Mahinpaupack in Northampton
 County Containing four hundred and Sixty one Acres one
 hundred and thirty perches and the allowance of Six pcent. Jac.
 To John Lukens Esquire } p. Geo. Palmer
 Surveyor General

IN TESTIMONY that the above is a copy of the original remaining on file in
 the Department of Internal Affairs of Pennsylvania, made
 conformably to an Act of Assembly approved the 16th day of
 February, 1833, I have hereunto set my Hand and caused
 the Seal of said Department to be affixed at Harrisburg,
 this seventh day of November 1899

James W. Latta
 Secretary of Internal Affairs.